

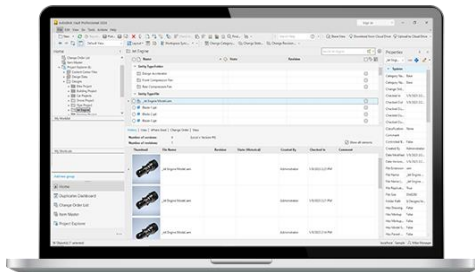


What's New in Vault 2024



Vault 2024: Enforcing Standards

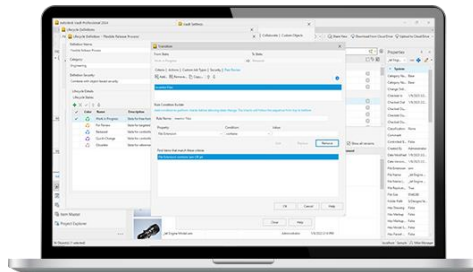
Delivering standards enforcement, intuitive tools, and administrative enhancements



Authors

Focus on the Work

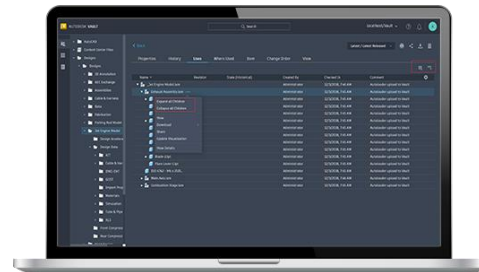
Export more design formats for downstream collaboration. Create new projects from a template structure.



Administrators

Enforcing Standards

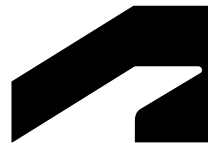
Manage and distribute Inventor template and design data. Enforce peer review during the design process.



Participants

Intuitive Tools for Collaboration

User-interface enhancements for more intuitive workflows and workflow enhancements.

An abstract, three-dimensional geometric structure on the left side of the slide, composed of transparent, metallic-looking rectangular blocks and thin rods, creating a complex, crystalline form.

Authors

Focus on the Work

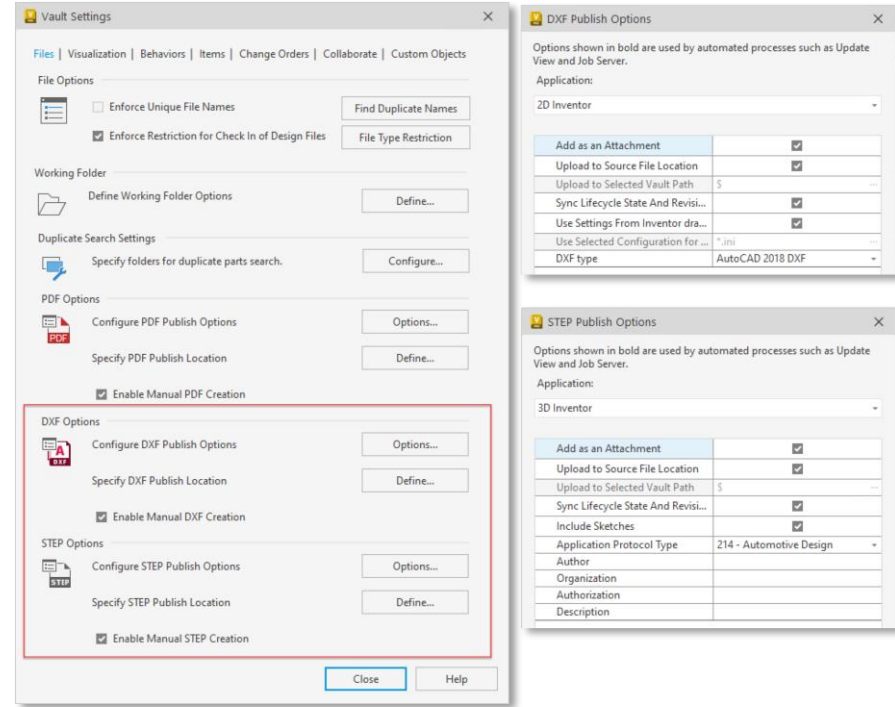
Export DXF & STEP Format

Benefits

- Users can export DXF and STEP files for manufacturing, suppliers, and subcontractors as part of the release process

Capabilities

- On-demand DXF/STEP publish
- DXF/STEP publish on state transition
- Sync LC state and revision on DXF/STEP files
- DXF/STEP file getting created in vault to use Design Rep classification and PDF like workflow
- DXF/STEP file publish options like PDF publish options



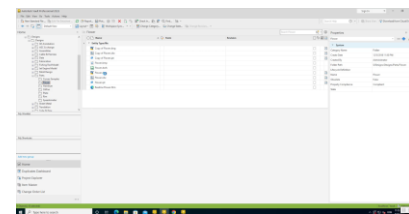
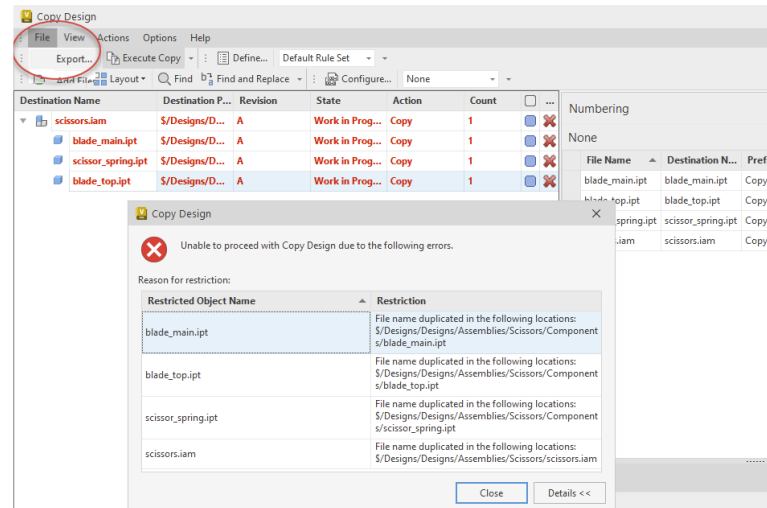
Copy Design Enhancements

Benefits

- Design re-use efficiency by reducing number of clicks to complete the workflow and pre-checks to prevent errors prior to creating a new design variation

Capabilities

- More **usability** by enabling Copy/Paste in the copy design numbering panel
- Use the Copy/Paste functionality to edit multiple row values in and excel spreadsheet and then copy them to the Copy Design with one operation
- More guidance through highlight restriction before copy operations start (property: --)
- Export File list within the warning dialog



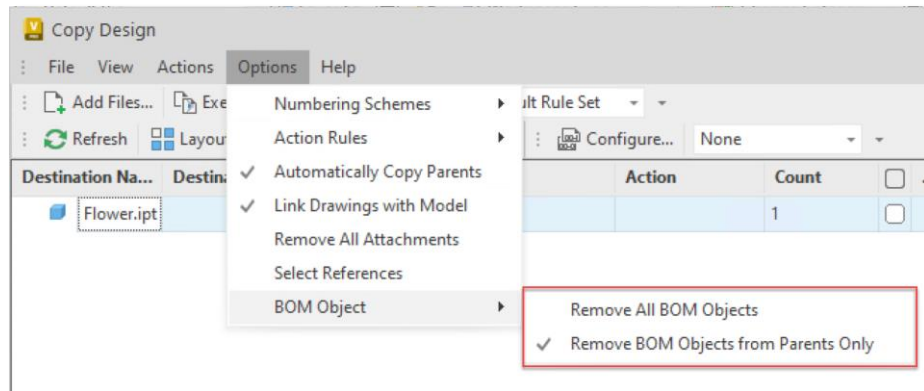
Copy Design BOM Enhancements

Benefits

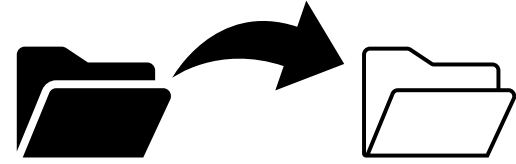
- Newly copied parts can be assigned to an Item immediately after Copy Design is executed

Capabilities

- Copy Design updates the BOM information in part files without having to open them in Inventor first



Copy Folder Structure

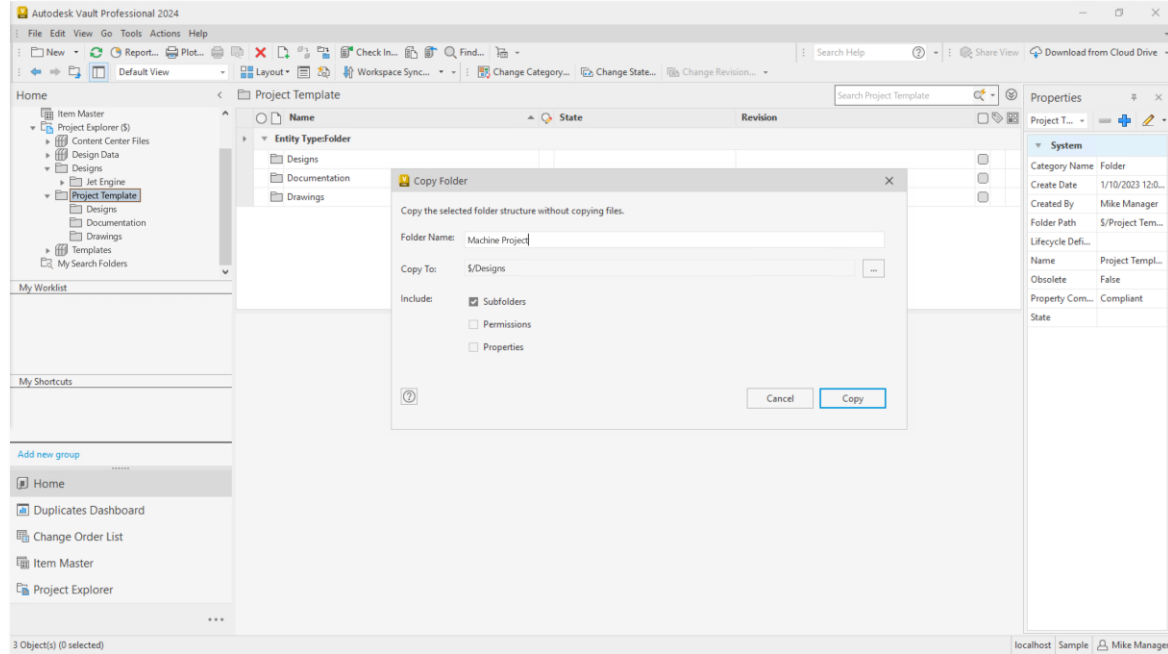


Benefits

- Setup a new project quickly
- Start with a known folder structure

Capabilities

- Users can create a project folder from a template or previous folder structure
- Copy Folder Structure permissions and Properties



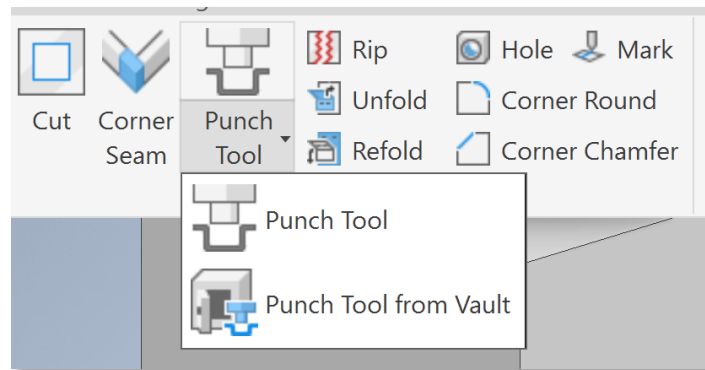
Insert Punch Tool from Vault

Benefits

- Users can select sheet metal punches from Vault when they are not in the local workspace

Capabilities

- Browse for 3D iFeature shapes from Vault to be inserted into the sheet metal face



An abstract, three-dimensional geometric structure on the left side of the slide, composed of transparent, faceted planes that create a sense of depth and complexity.

Administrators

Enforcing Standards

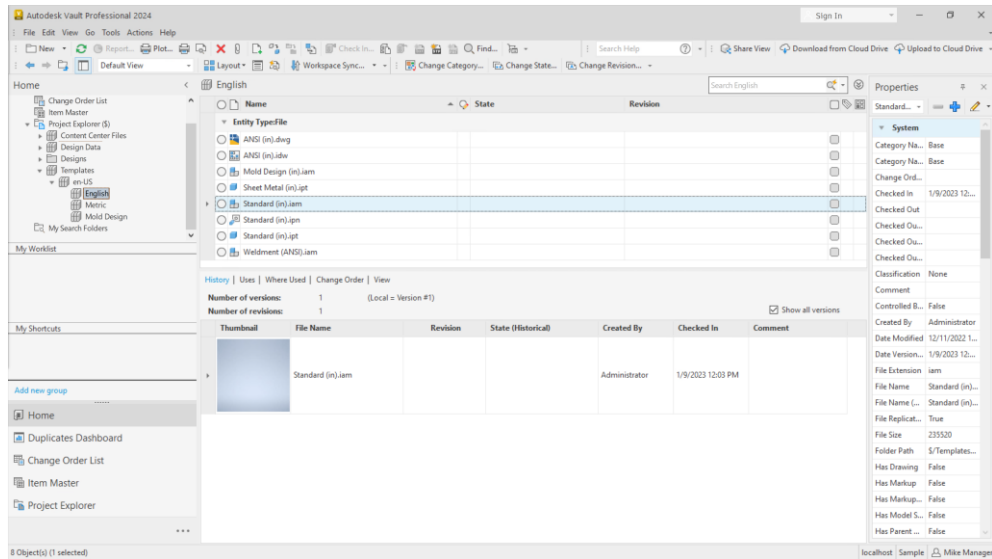
Inventor Design Data & Template Management

Benefits

- CAD Administrator can create and deploy template updates to users easily through Vault
- Users remain up-to-date with templates and design data without manual updates

Capabilities

- Inventor\Vault integrated experience for the Template and Design Data Files
- Automatic updates of Templates and Design Data within specific workflows



Peer Review



Benefits

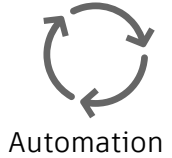
- Control the lifecycle process by requiring a different user to transition to the next state

Capabilities

- Configure State transition to require Four Eyes Check
- Configure multiple rules for which files require Peer Review based on property values

A screenshot of a software application window titled "Transition". The window has a tabbed interface with "Criteria", "Actions", "Custom Job Types", "Security", and "Peer Review" (which is currently selected). The "From State" is "Work in Progress" and the "To State" is "Released". Below the tabs, there are buttons for "Add...", "Remove...", "Copy...", and a refresh icon. A list titled "Inventor Files" is shown. Below this is the "Rule Condition Builder" section, which includes a "Rule Name" field containing "Inventor Files". It features three input fields: "Property:" with a dropdown menu showing "File Extension", "Condition:" with a dropdown menu showing "contains", and "Value:" with a text field containing "ipt or iam". To the right of these fields are buttons for "Add", "Replace", and "Remove". Below the rule builder, there is a section "Find items that match these criteria:" followed by a list box containing the text "File Extension contains ipt or iam". At the bottom of the window are "OK", "Cancel", and "Help" buttons.

Job Processor

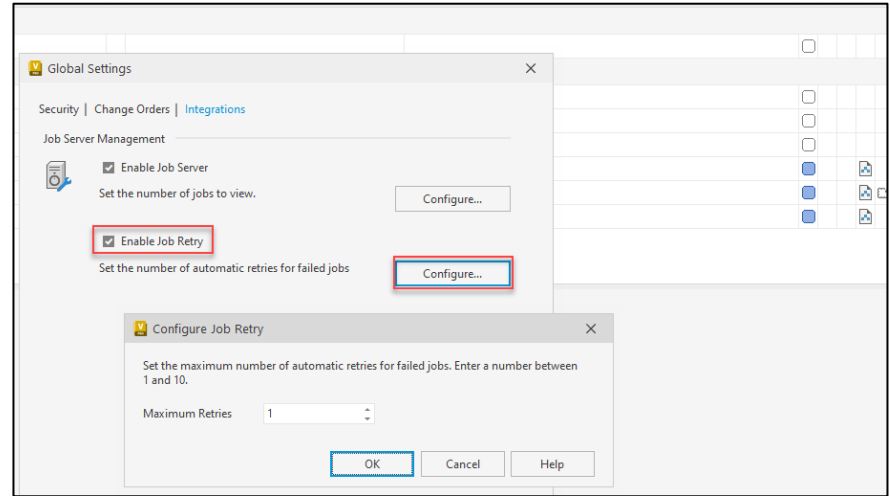


Benefits

- Apply retry strategy to visualization and custom jobs to reduce administration and user disruption to re-submit such jobs manually

Capabilities

- Automatic Retry capability for failed Job
- Specify retry strategy between 1 and 10 attempts
- The Job Processor will retry the failed jobs automatically without manual intervention



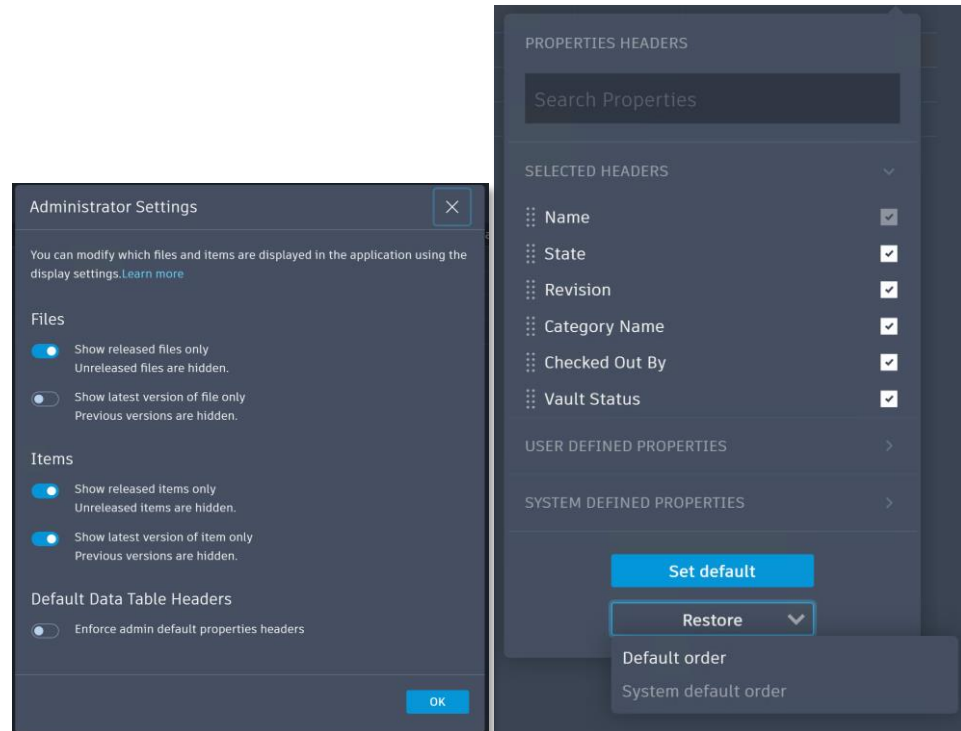
Thin Client – Admin Settings

Benefits

- Administrators can set default columns for all Thin Client users

Capabilities

- Administrators set default columns



Backup/Restore Enhancements

Support for Large Vault Environments



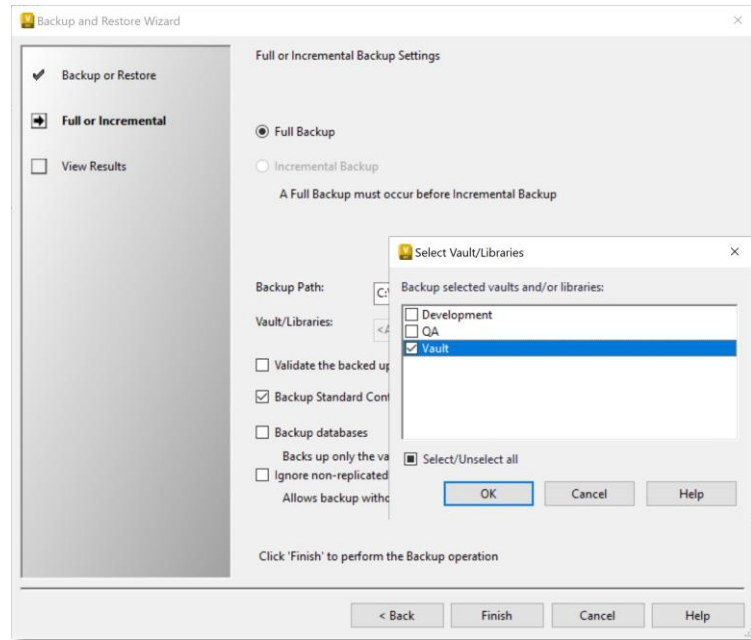
Granularity

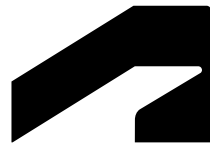
Benefits

- Provide more flexibility in the Vault Server backup command to assist with backing up specified data components
- Help customers with large Vault environments that cannot use the existing backup command in the Vault Server

Capabilities

- Backup databases only
- Perform selective vault and library databases to backup
- Use existing file store during the restore process
- Do not run a file store validation during the restore process



An abstract, three-dimensional geometric structure on the left side of the slide, composed of transparent, faceted planes that intersect to form a complex, crystalline shape. It has a metallic sheen and is set against a white background.

Participants

Intuitive Tools for Collaboration

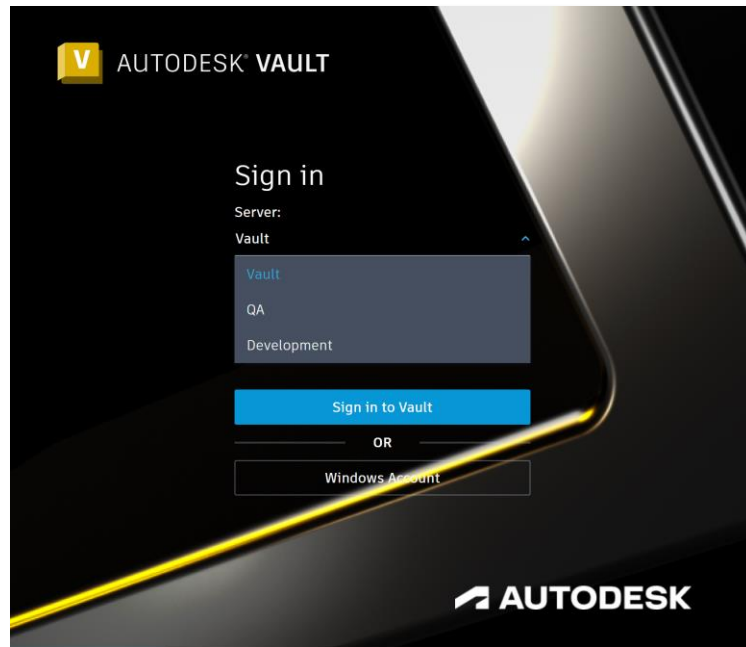
Thin Client – Enhancements

Benefits

- Select the vault you need at the time of signing into the Thin Client

Capabilities

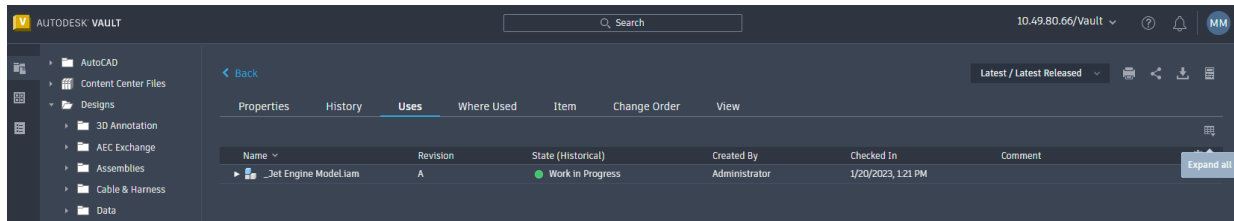
- Vault drop-down list showing the available vaults on the server



Thin Client – Enhancements

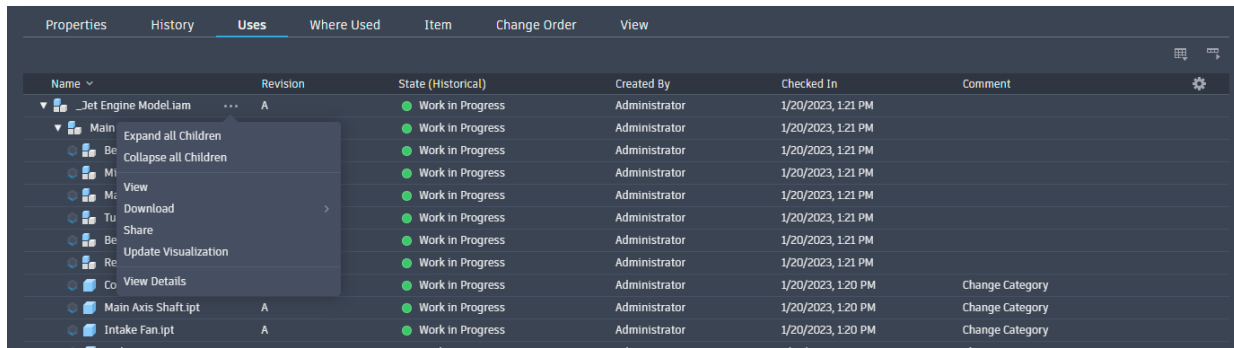
Benefits

- Improve interactions and control within the Thin Client interface



Capabilities

- Control for Expanding or Collapsing All for Objects with Structure



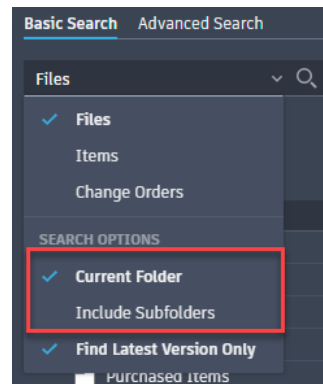
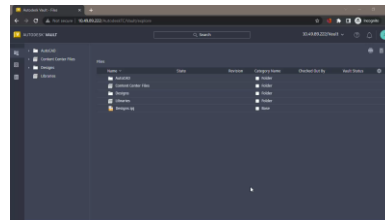
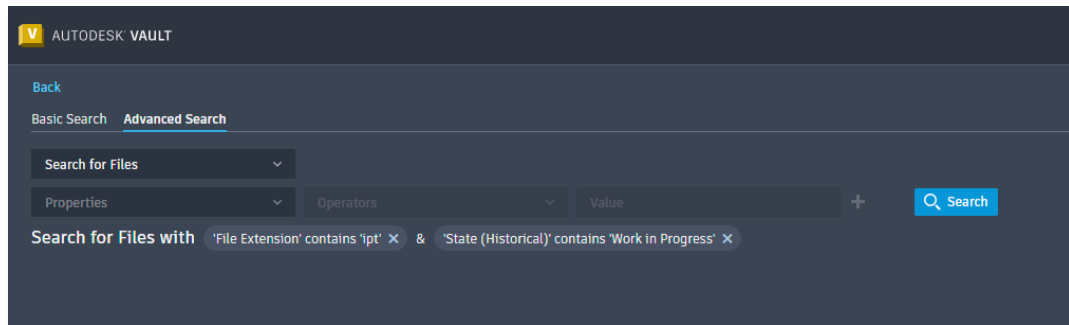
Thin Client – Search Enhancements

Benefits

- Advanced Search capabilities paired with a modern UI for better experience

Capabilities

- Save searches as bookmarks in the browser
- Search individual workspaces or multiple workspaces
- Search workspaces of choice with search parameters
- Search current folders and sub-folders
- Find latest version only



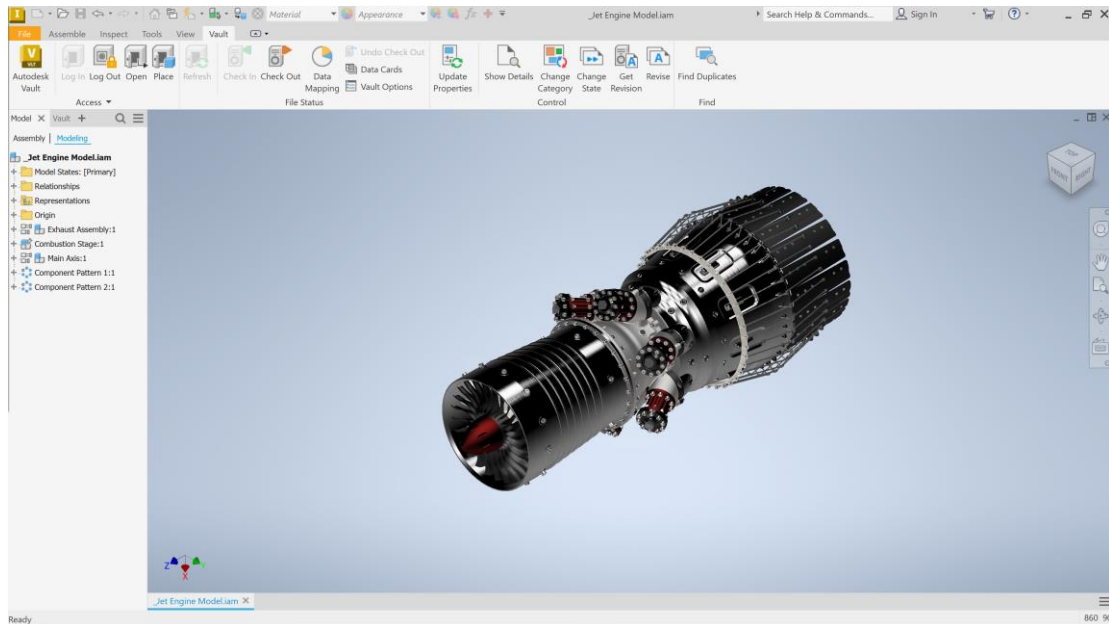
Inventor Read-Only Vault Add-in

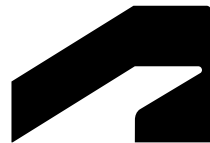
Benefits

- Users get access to Vault Professional data directly from Inventor Read-only
- Review models efficiently without going between applications

Capabilities

- Vault Add-in available in Inventor Read-only
- Open files from Vault Professional in Inventor Read-only





Idea Requests

Other Ideas Implemented

Interface Updates

- Authentication Options sorted alphabetically
- Home page sorting order consistency

