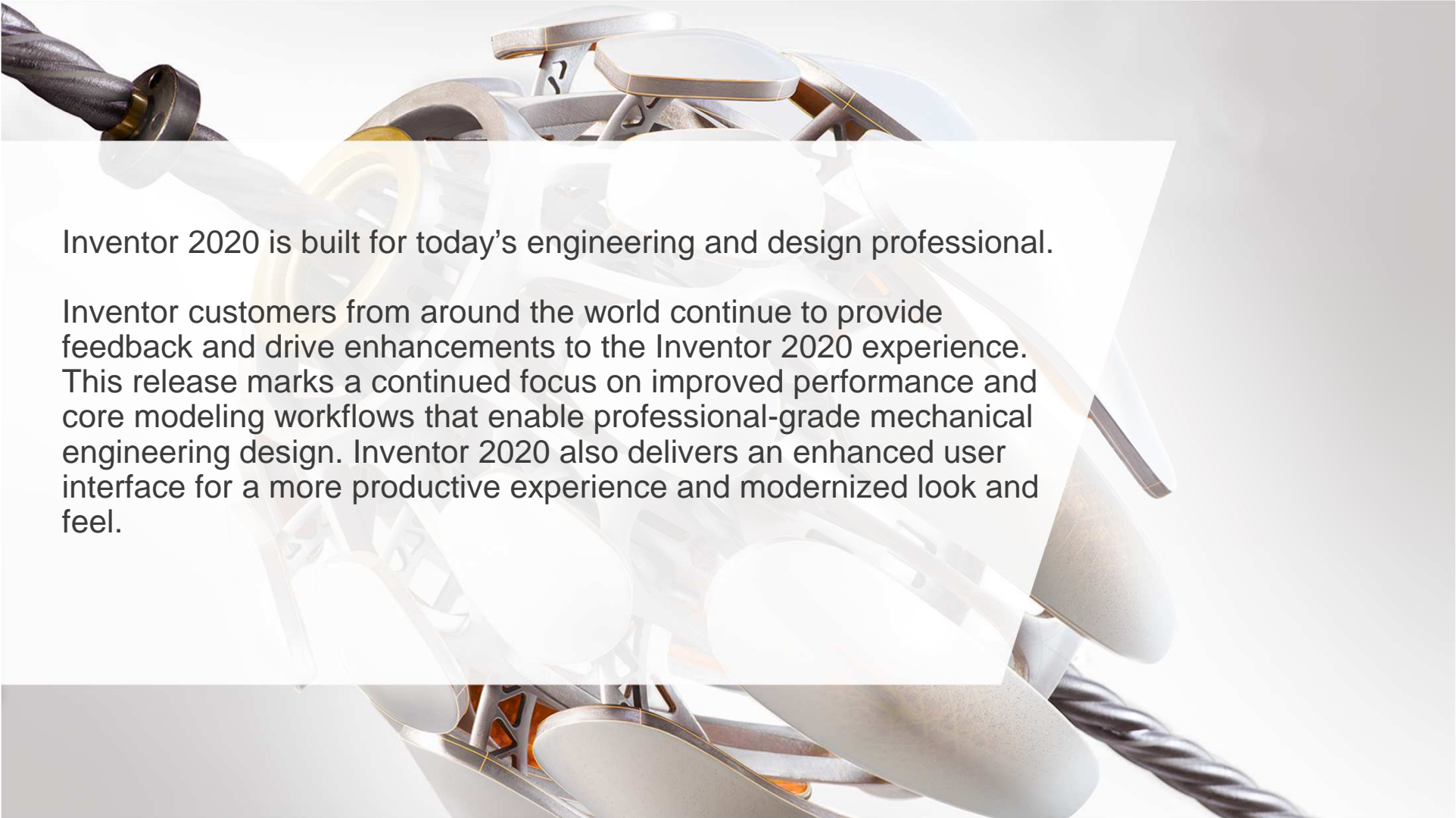




## Inventor 2020 What's New

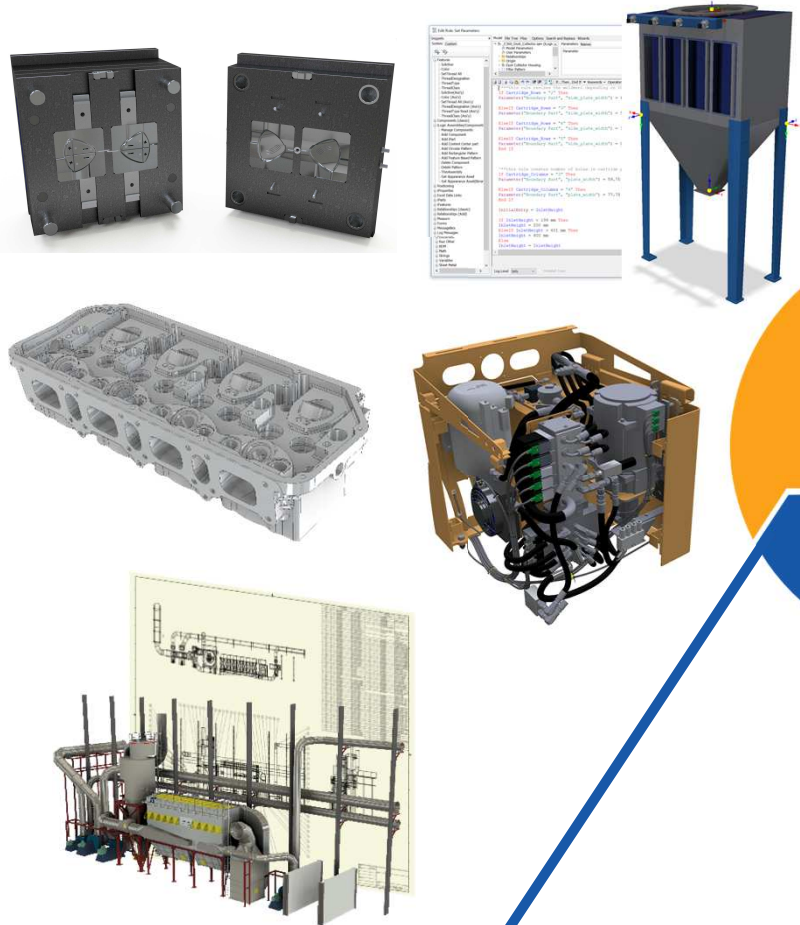




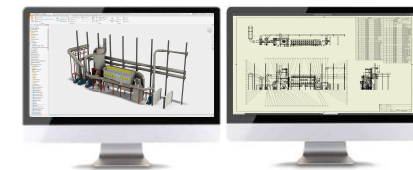
Inventor 2020 is built for today's engineering and design professional.

Inventor customers from around the world continue to provide feedback and drive enhancements to the Inventor 2020 experience. This release marks a continued focus on improved performance and core modeling workflows that enable professional-grade mechanical engineering design. Inventor 2020 also delivers an enhanced user interface for a more productive experience and modernized look and feel.

PROFESSIONAL GRADE

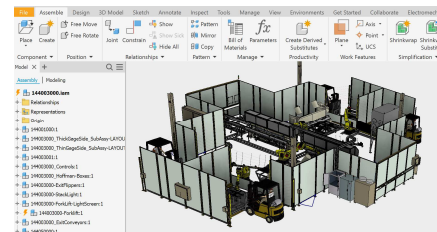


CONNECTED



**I** INVENTOR IDEAS 

INVENTOR EXPERIENCE

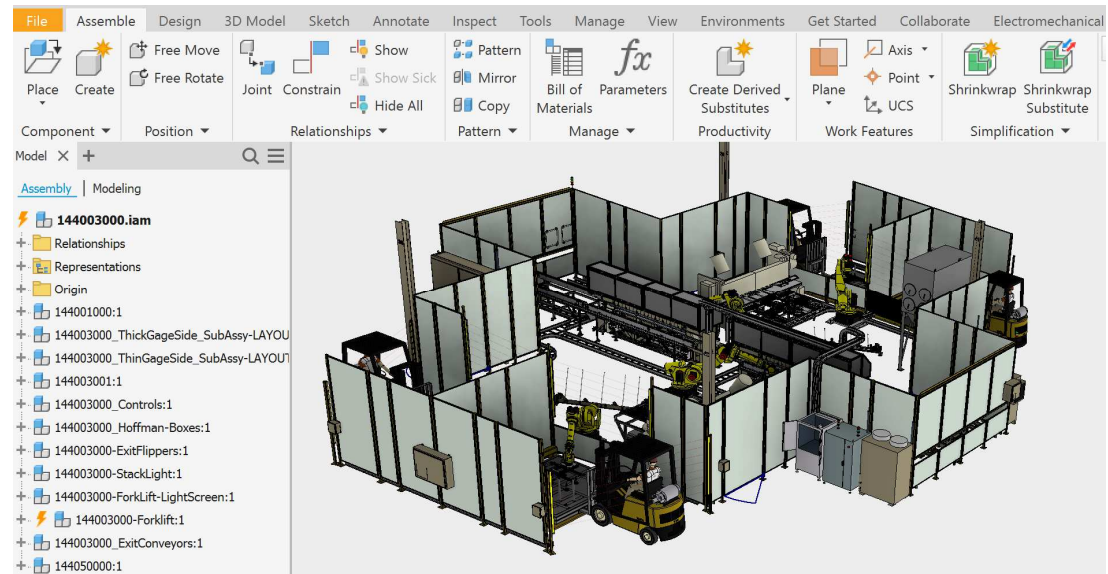
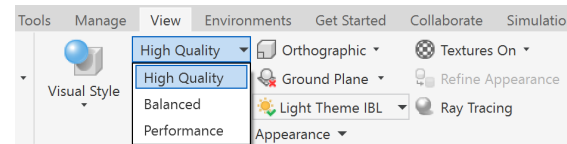


# UI Enhancements

## Light Theme Interface

## Visual Refresh

- Lighting Styles
- Icon Refresh
- Feature Manipulators
- Thread Texture
- Graphic Presets

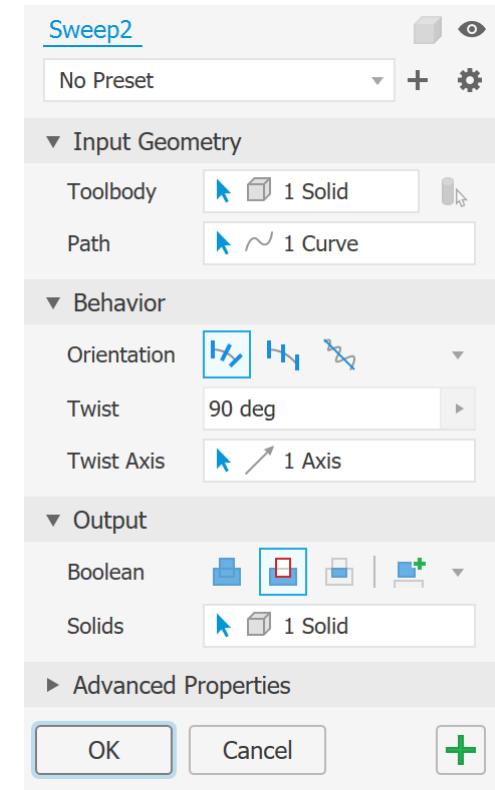
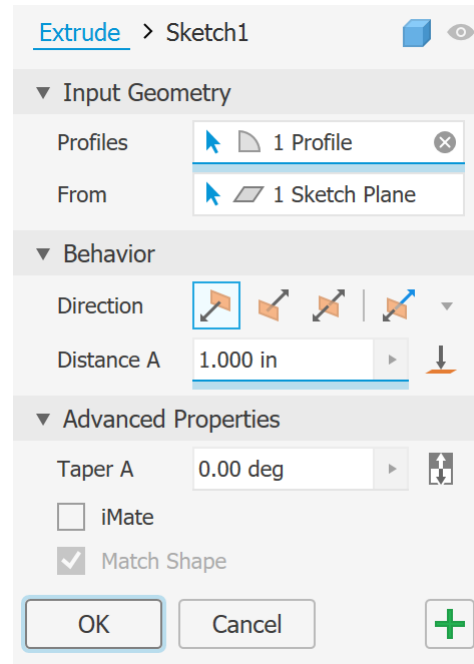


*Visual refresh of Inventor for improved usability*

# Command Enhancements

## Command Property Panels

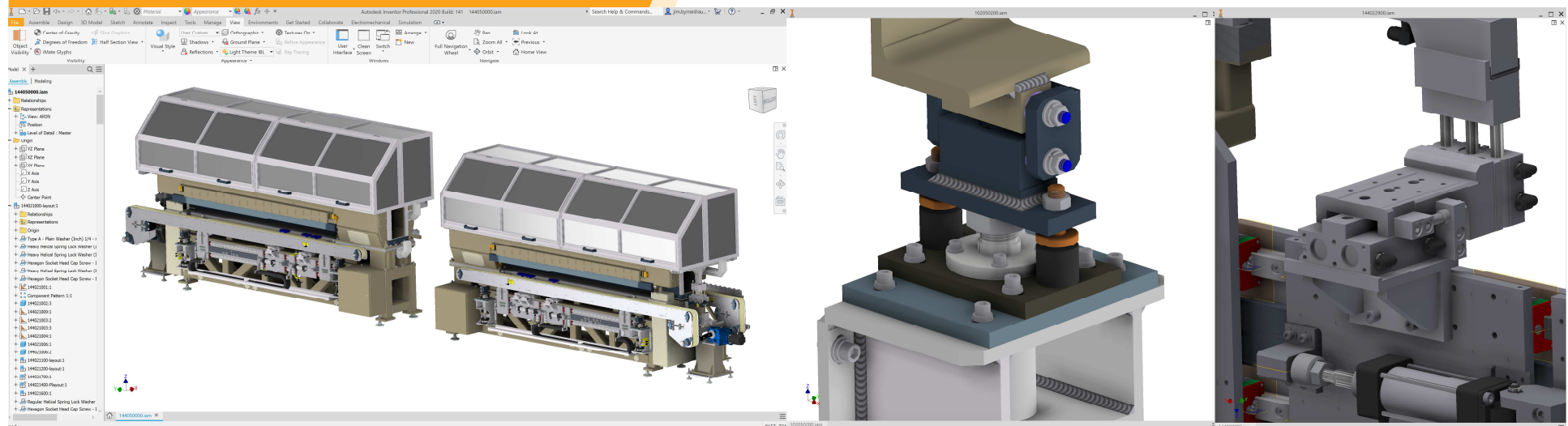
- Extrude
- Revolve
- Sweep
- Thread



*Command refresh to add functionality and increase your productivity*



# Multi-Monitor Support



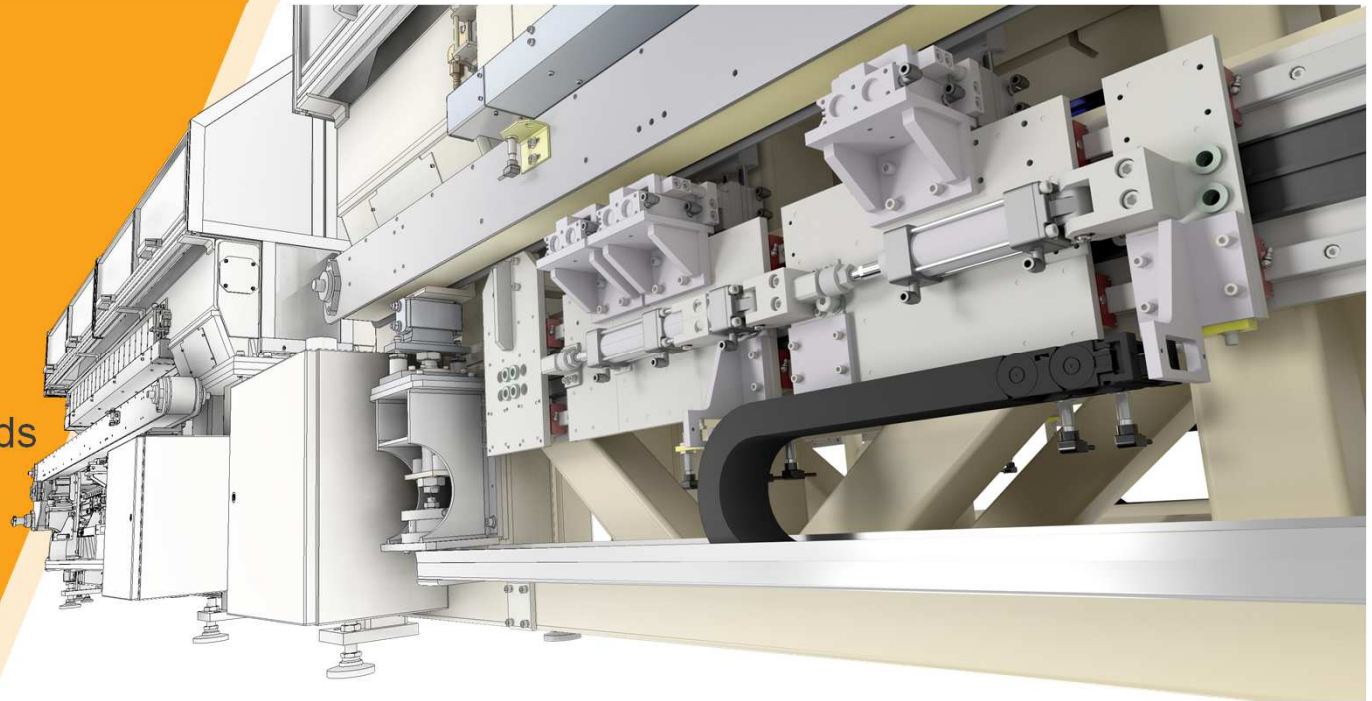
*Use a single session of Inventor to work seamlessly across multiple monitors*



# Performance

## Assembly Performance Improvements

- In-place Edit
- Window Selection
- View Orientation
- Component Pattern
- Express Mode
  - Available commands
  - 3D Section View



*Enabling you to make larger, more complex Inventor designs*



# Performance

## Part Design

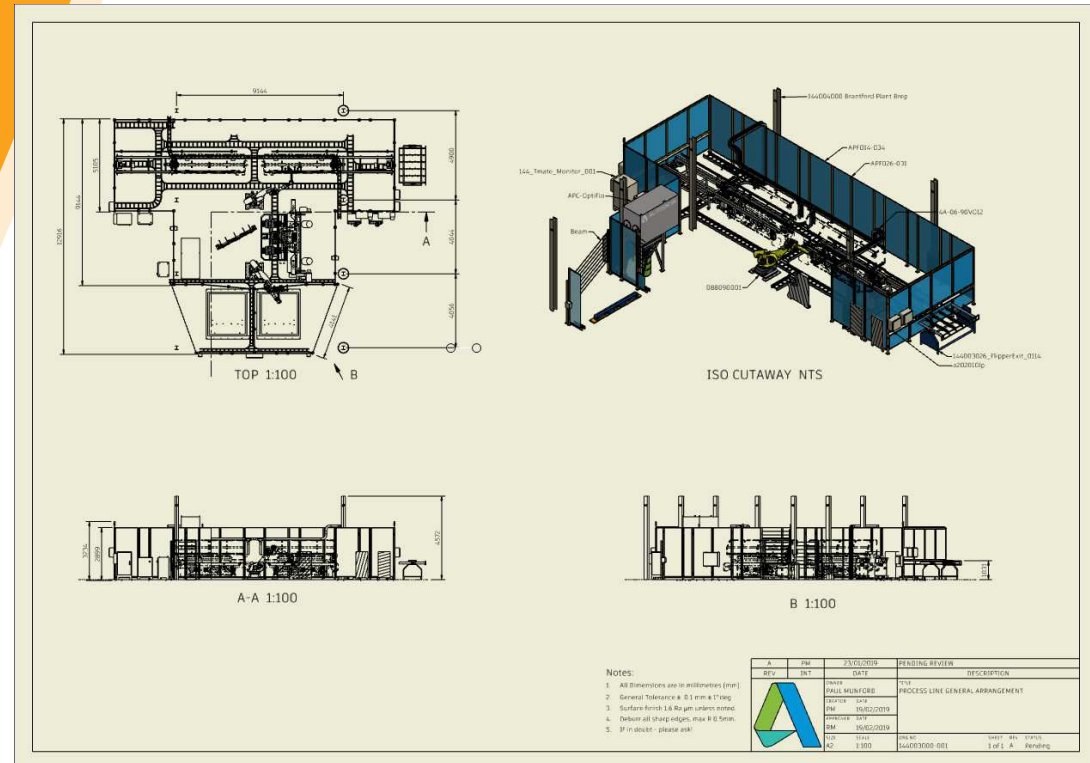
- Feature patterns

## Drawing Creation

- View preview
- Hidden line display
- Auxiliary view
- Section view

## AnyCAD Interoperability

- Import
- Editing referenced files



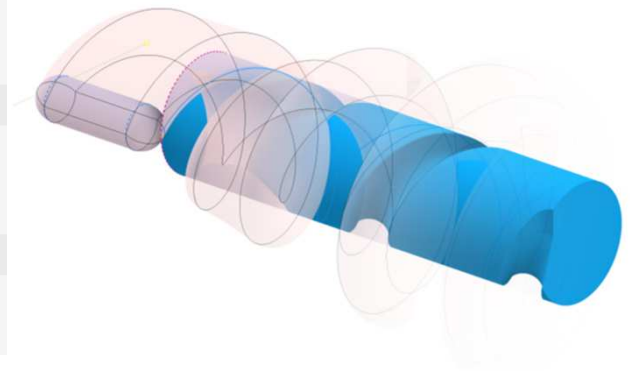
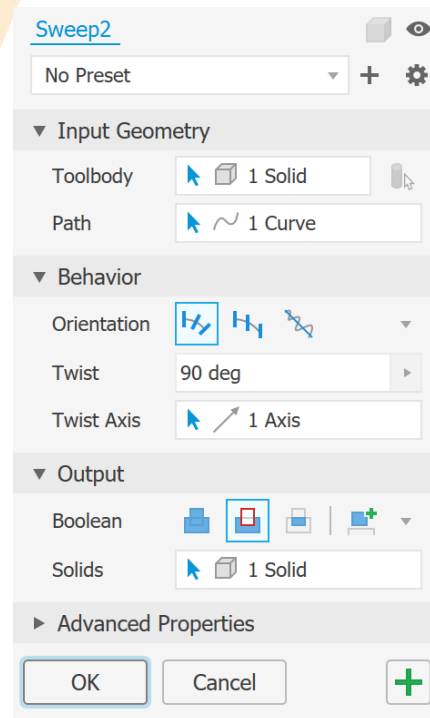
*Continued performance improvements throughout Inventor*



# Design Enhancements

## Solid Sweep

- Controlled Behavior
- Simulate Toolpaths

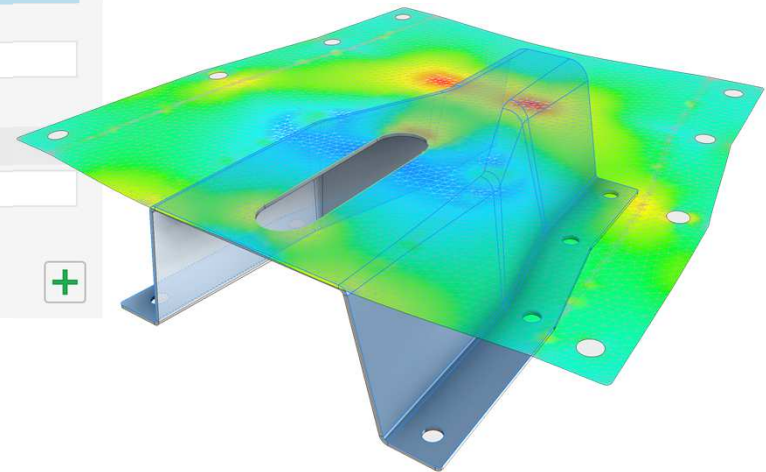
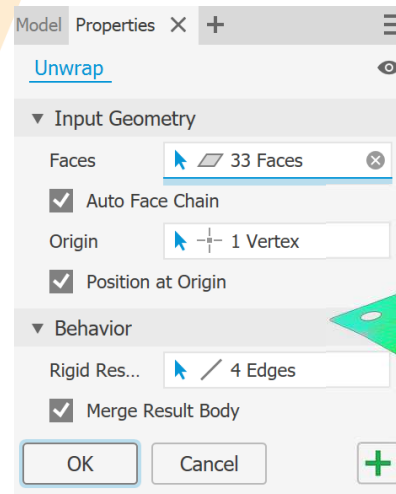


*Use a tool body to add or remove geometry in the Sweep command*

# Design Enhancements

## Unwrap

- Fabric or stamped objects
- Include in a drawing



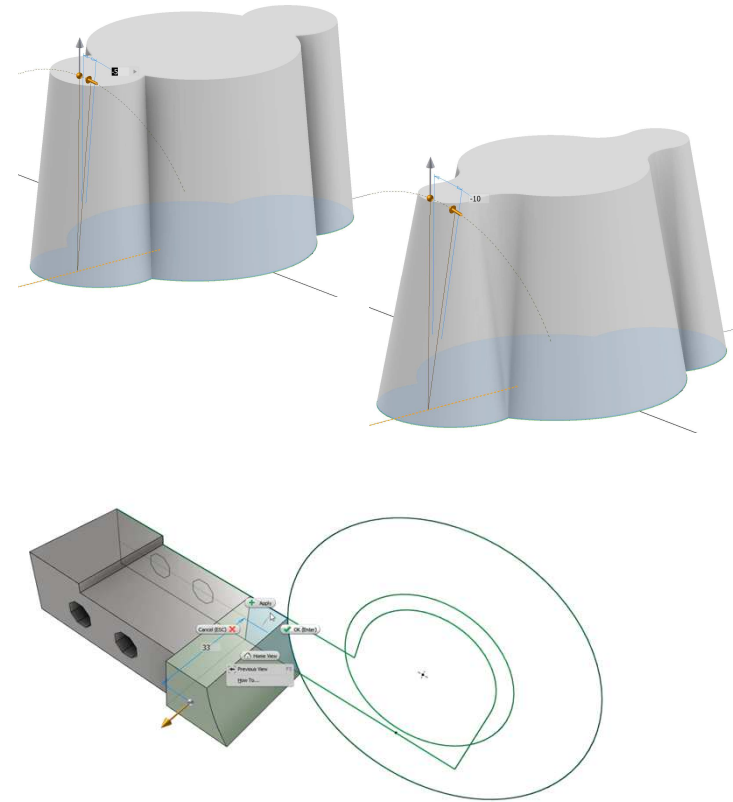
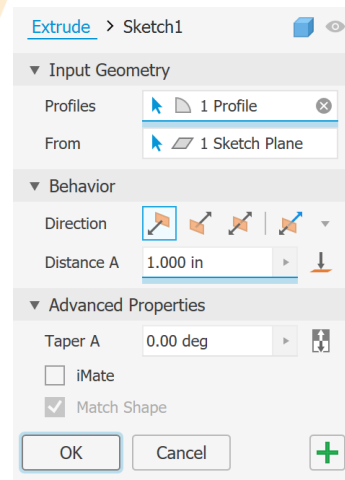
*Unwrap a set of contiguous faces as a single flat surface*



# Design Enhancements

## Extrude Taper Option

- Merges the Faces
- Loop and Region Detection
- Highlight Enclosed Regions
- Sketched Blocks



*Leverage more complex sketches easily within Extrude*

# Design Enhancements

## Relationships Enhancement

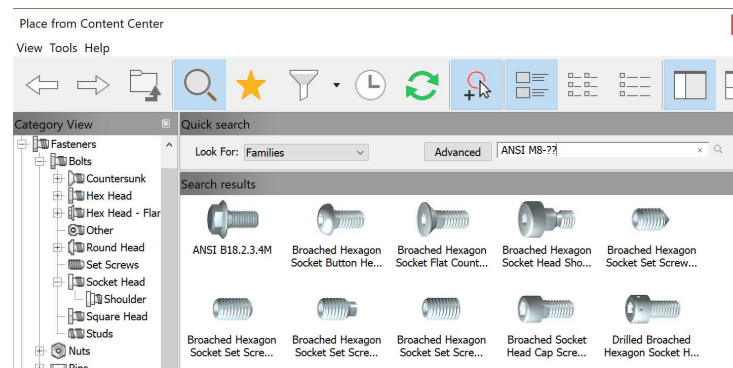
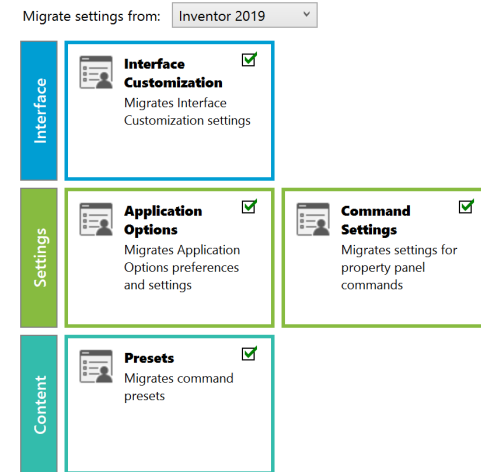
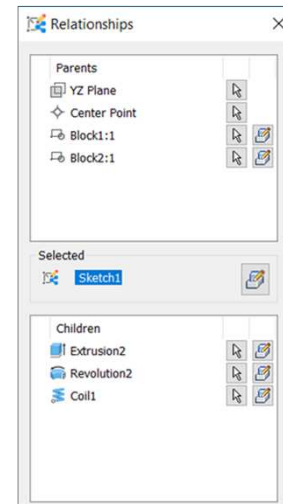
- Sketch Blocks

## Content Center

- Keyword Search
- Quick Wildcard Characters

## Migration Enhancements

- Property Panel Advanced Settings
- Command Presets



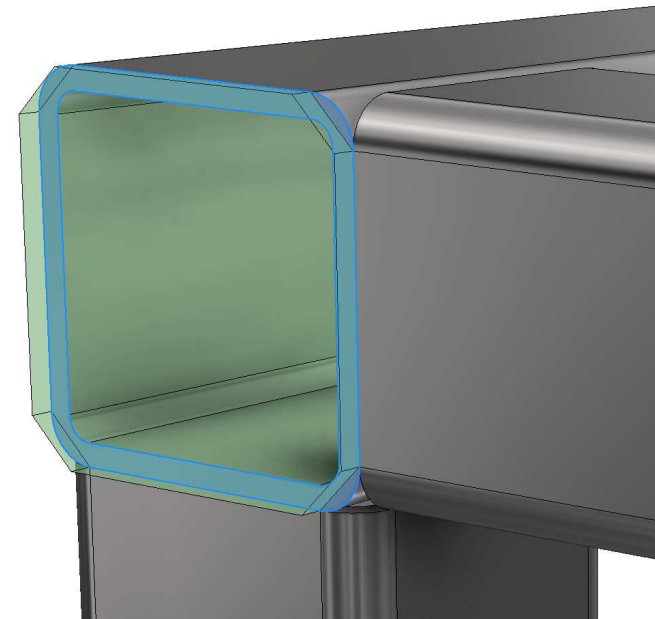
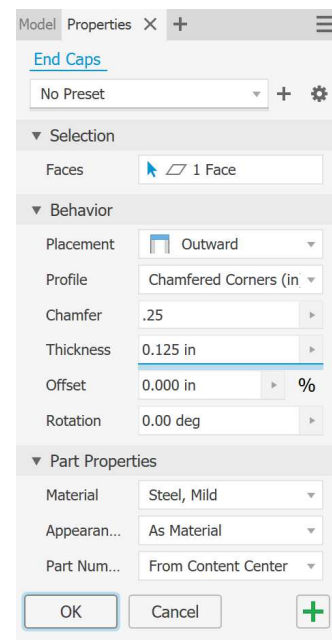
*Continued improvements to your productivity*



# Frame Generator

## End Caps

- Standard and Custom
- Notch Command
- Property Panel
- Custom Notches

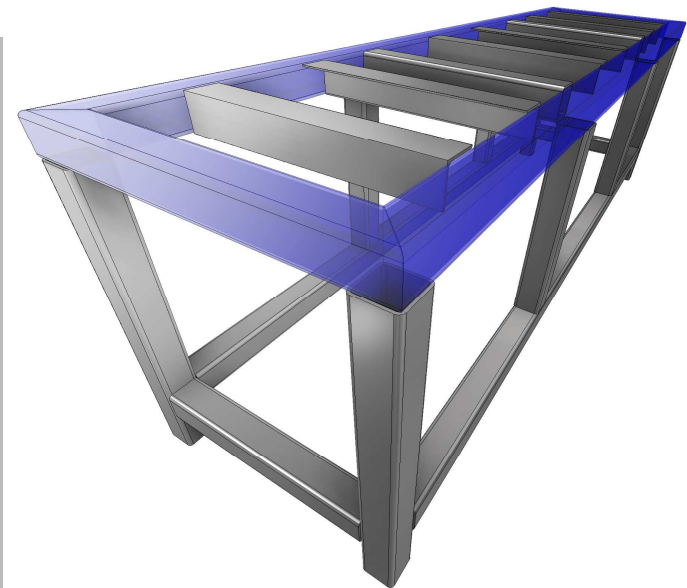
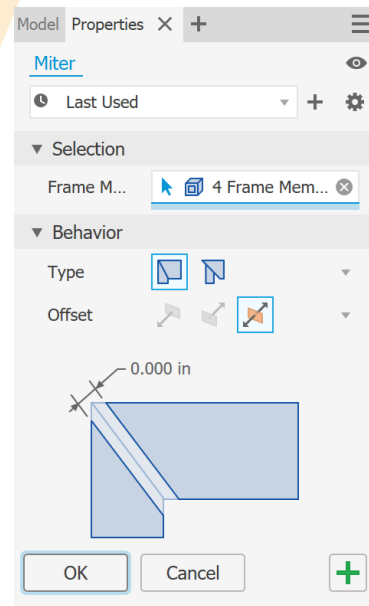


*Customer requested functionality for Frame Generator*



# Frame Generator

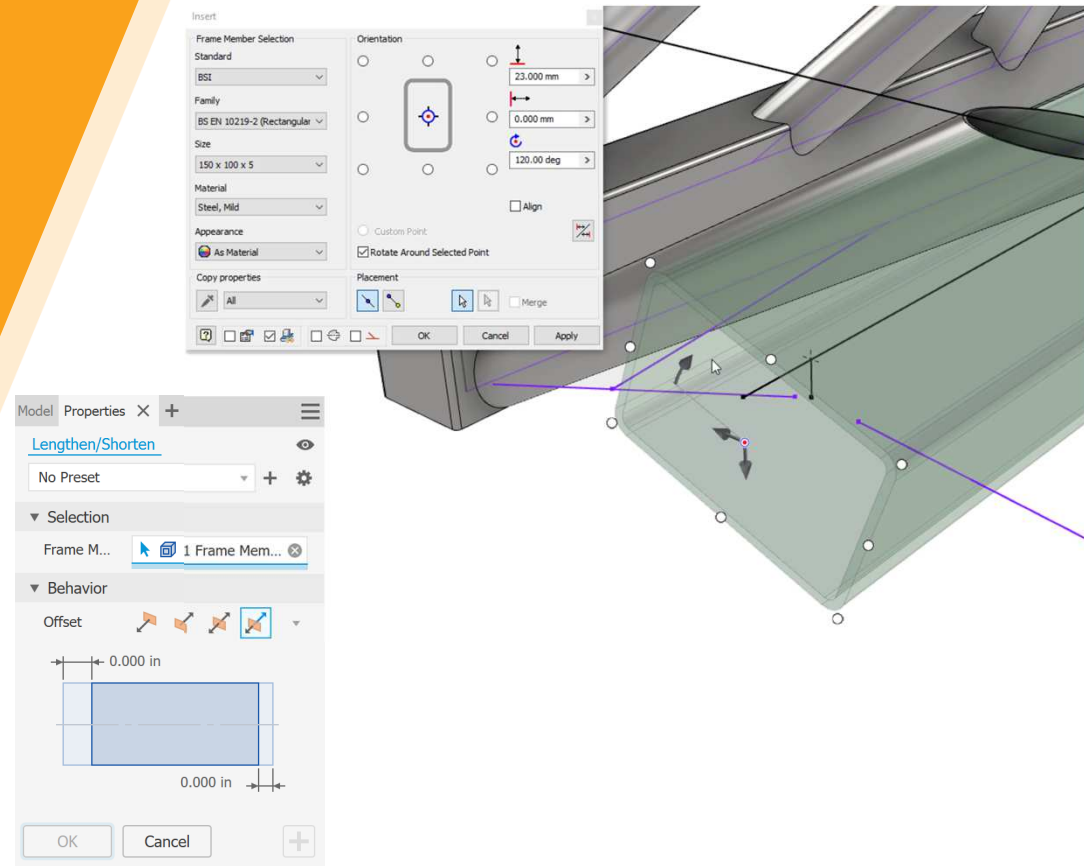
- Miter Property Panel
- Trim / Extend to Face
- Remove End Treatments



*Enhanced functionality to improve your Frame Generator design workflows*

# Frame Generator

- In-canvas Manipulators
- Asymmetric Lengthen / Shorten



*Improved workflows to reduce design time and effort*





## Customer Driven Improvements



# Customer Driven Improvements

## Sheet Metal Mirroring

- Link Style

## Joints

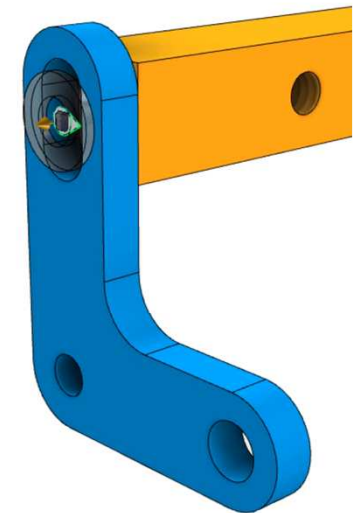
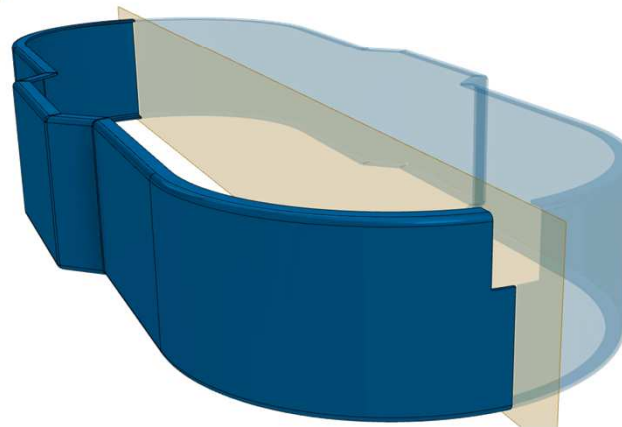
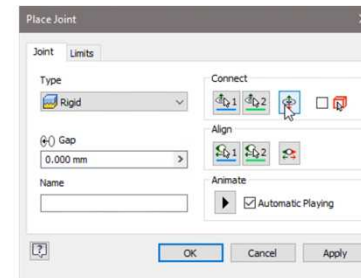
- Select Slot Center

## Tube & Pipe

- Naming Defaults

## Design Accelerator

- Shaft Generator

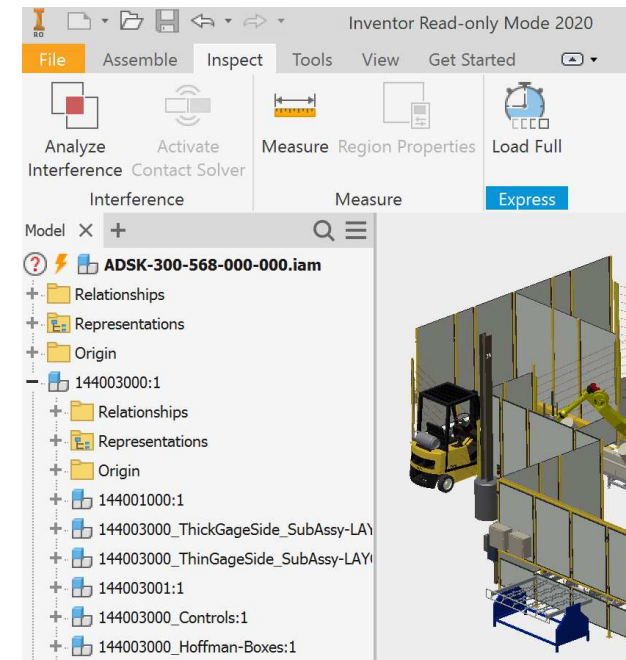
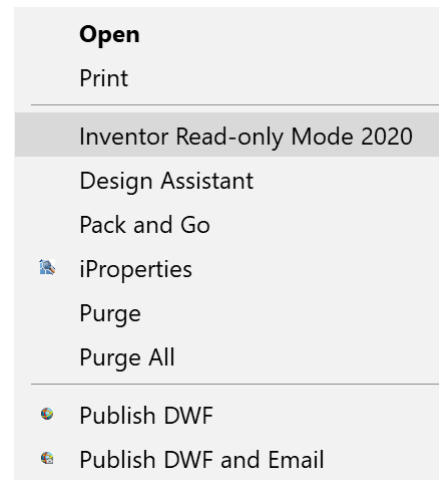


*Continued improvements to your productivity*

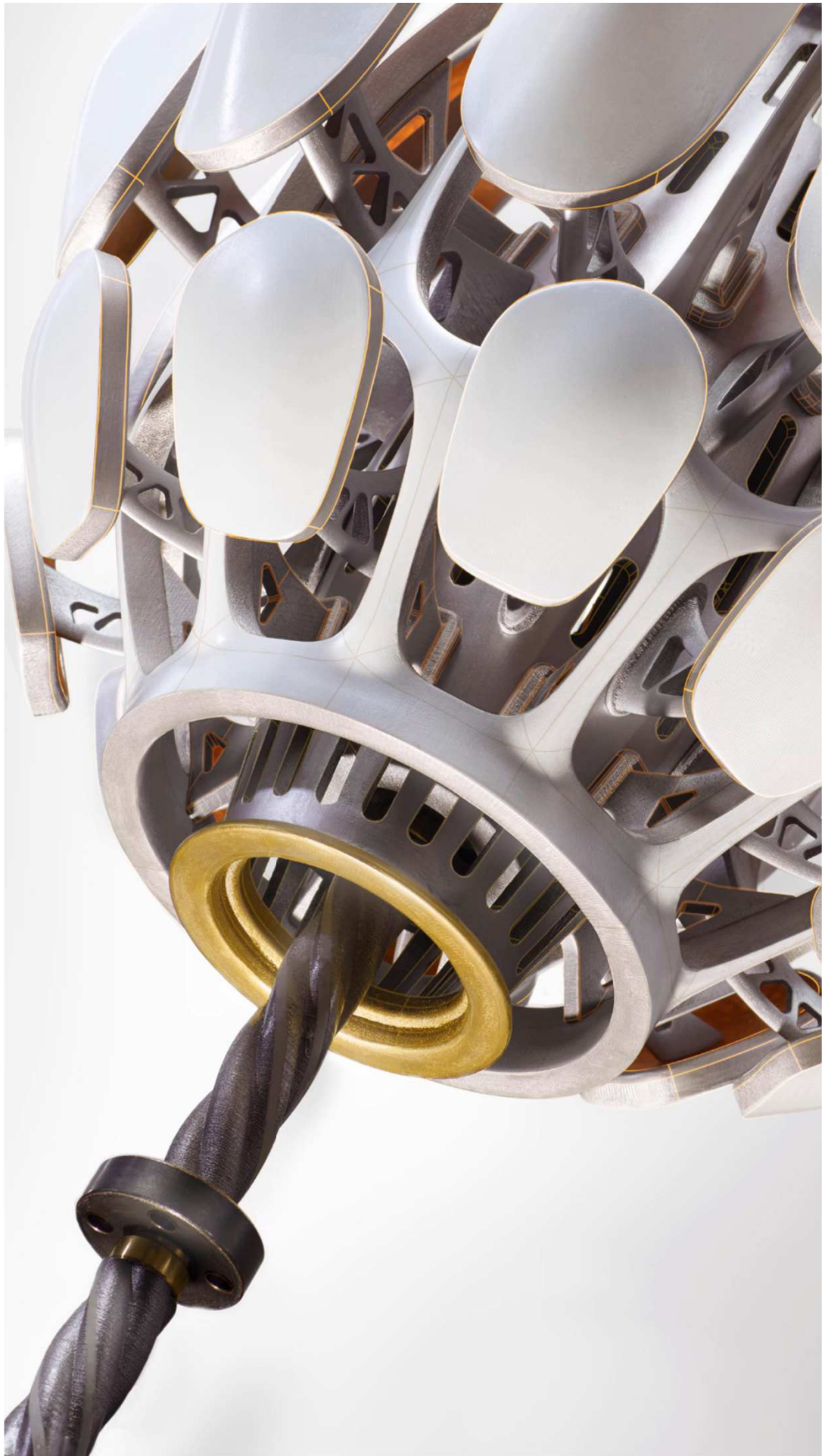
# Customer Driven Improvements

## Read Only Mode

- View native Inventor designs



*A consistent experience for viewing Inventor files as read only*



# Interoperability

## Version Updates

- CATIA V5
- JT
- Parasolid
- Rhino
- SolidWorks

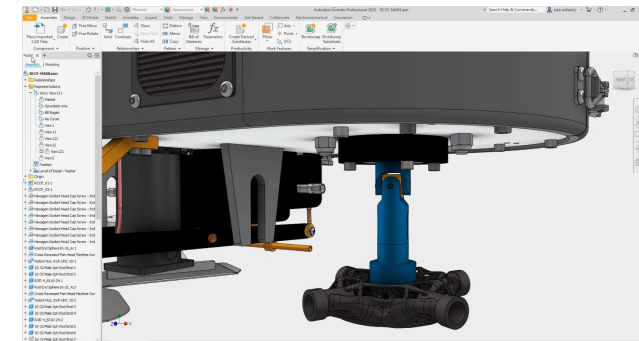
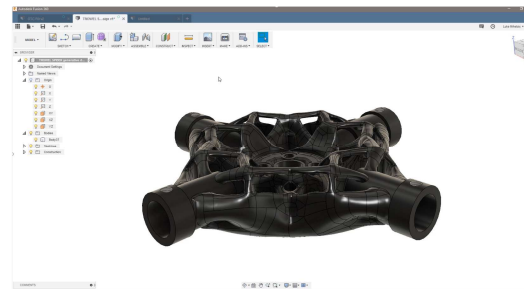
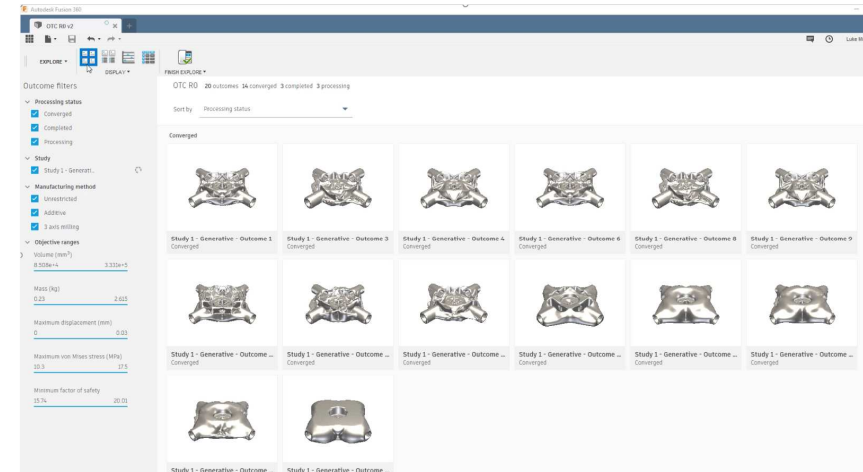




# Inventor and Fusion 360 AnyCAD

## AnyCAD for Fusion 360

- Associativity with Fusion 360 designs
- Access to Fusion 360  
\*Generative Design



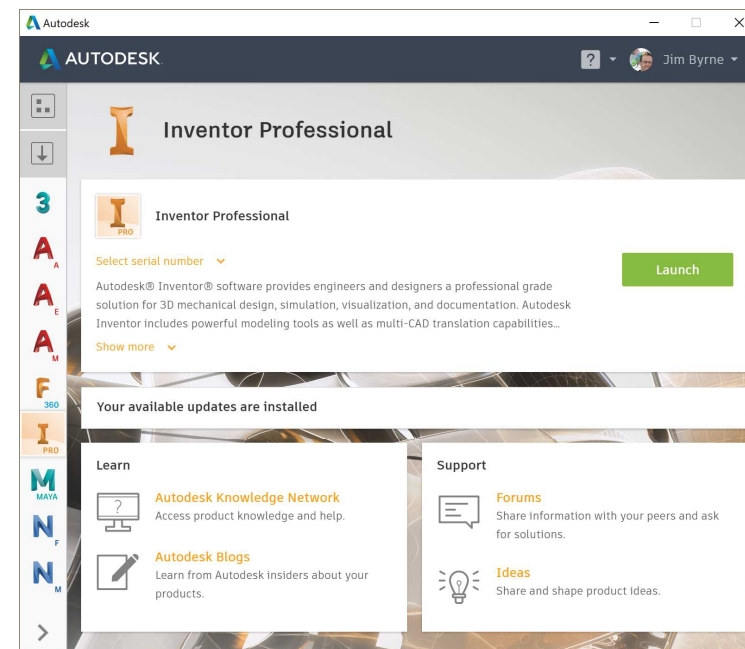
*Work seamlessly between your Inventor and Fusion 360 designs*

\*Access to Fusion 360 is available for Product Design and Manufacturing Collection subscribers



# Accessing Inventor 2020

- Autodesk Desktop App
- Autodesk Account



# Make your voice heard

Inventor Feedback Community

<https://autode.sk/InventorBeta>

Inventor Ideas Page

<https://autode.sk/InventorIdeas>



## INVENTOR PRODUCTS

GETTING STARTED

LEARN & EXPLORE

DOWNLOADS

TROUBLESHOOTING

FORUMS

Idea Board



Search



## Inventor Ideas

Share ideas for future product features directly with the Inventor team and collaborate on existing suggestions with your peers.

SUBMIT IDEA



Questions?



# Thank You

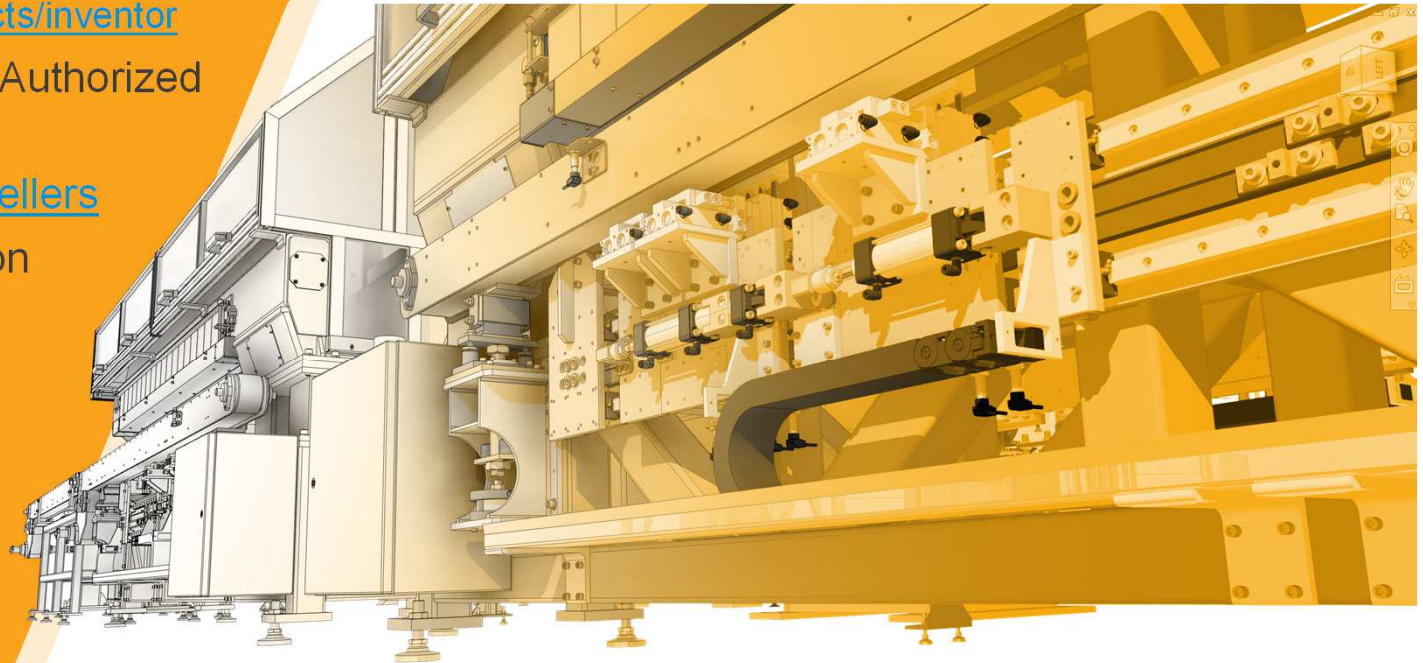
Autodesk Inventor

[www.autodesk.com/products/inventor](http://www.autodesk.com/products/inventor)

Contact your Autodesk Authorized Reseller

[www.autodesk.com/resellers](http://www.autodesk.com/resellers)

- Presenter Information
- First/Last Name
- Title
- Email
- Twitter/facebook/  
LinkedIn





Autodesk and the Autodesk logo are registered trademarks or trademarks of Autodesk, Inc., and/or its subsidiaries and/or affiliates in the USA and/or other countries. All other brand names, product names, or trademarks belong to their respective holders. Autodesk reserves the right to alter product and services offerings, and specifications and pricing at any time without notice, and is not responsible for typographical or graphical errors that may appear in this document.  
© 2019 Autodesk. All rights reserved.